

MITYLITE®

Residence INN®
BY MARRIOTT

Marriott
APPROVED VENDOR



STACKING
BANQUET CHAIR



SOLID WOOD
GUESTROOM CHAIR

holsag
COLLECTION

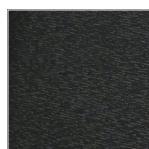


The **Residence Inn® by Marriott Premium Stacking Banquet Chair** is built with comfort and style in mind. Thick, plush cushions add a luxurious feel, while an integrated flex-back feature allows guests to lean back for individualized comfort. Stackable and lightweight, it's easy to set up and move around.

PRODUCT FEATURES

- 1** Hourglass back style with flex-back
- 2** Built-in hand grip
- 3** Comfortable padded seat and backrest
- 4** Premium chrome floor glides
- 5** Stack bar and stacking buttons
- 6** Durable, 100% polyester fabric

FABRIC



Raven

FRAME FINISH



Cocoa

OPTIONAL UPGRADES

Retractable Ganging (\$3.50)



FRAME

Constructed from 18-gauge tubular steel, it can support 1,000 pounds.

BACK STYLE

Hourglass-shaped backrest offers ample back support with a built-in hand grip.

FRAME FINISH

Glossy powder-coated finish resists scratches and stains.

ANTI-SWAY BARS

For added stability, steel anti-sway bars run across the back of the chair.

BACKREST

Fully padded and upholstered, backrest features a flexing back for individualized comfort.

SEAT

Injection molded polypropylene seat base topped with a contoured, 2.65-inch (6 cm) foam cushion and durable polyester fabric upholstery.

WATERFALL EDGE

Seat cushion features a waterfall edge for extra comfort.

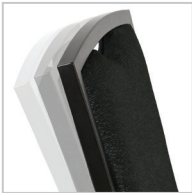
GLIDES

Premium chrome floor glides protect floors.



STACKING

The optimal chair stack height is 10 chairs per stack.



FLEX-BACK

Flex-back feature allows guests to lean back slightly for individualized seating comfort.



GANGING

Retractable ganging (optional upgrade).

SPECIFICATIONS

SEAT HEIGHT	SEAT WIDTH	SEAT DEPTH	OVERALL HEIGHT	OVERALL WIDTH	OVERALL DEPTH	WEIGHT
19.2 in (48.7 cm)	17.3 in (43.9 cm)	19.9 in (50.5 cm)	37 in (93.9 cm)	18.3 in (46.4 cm)	22.2 in (56.3 cm)	15.5 lbs. (7 kg)

The beautiful beechwood frame and plush seat make the **Lucca** perfect for hotel lobbies and guest rooms. The stain color is hand-rubbed and covered with a catalyzed lacquer to ensure the color will hold and not show scratches. A nine-step finishing process is used so the gorgeous textures and warm color of the frame won't fade after years of hard use. The chair features an antimicrobial finish to inhibit the growth of microorganisms, such as bacteria, fungi, algae, mold, mildew, and some viruses.

PRODUCT FEATURES

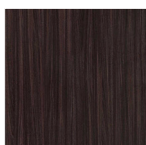
- 1** Built with 100% European Beech hardwood
- 2** Delivers exquisite comfort with a plush polyurethane foam-padded seat and back
- 3** Provides added comfort with a web suspension seat base that minimizes pressure points
- 4** Ensures unmatched durability with mortise and tenon joints that are sealed using high solids glue
- 5** Features a unique nine-step frame finishing process for a durable stain color that lasts
- 6** Increases safety with an antimicrobial finish

FABRIC & STAIN

OPTION 1



Fil Doux
Equestrian, Chocolate

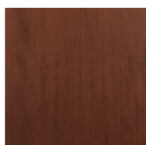


Blackened
Legno

OPTION 2



Fil Doux
Equestrian, Taupe



1005-SFB
Chestnut



FRAME

The frame is built using 100% solid European beech, a strong, bendable, and renewable hardwood. This light-colored wood is ideal for staining which provides an attractive finish in any color.

FRAME FINISH

The stain is hand-wiped into the grain to ensure even color and maximum penetration into the wood. The frame is then sanded and sprayed with two coats of a catalyzed antimicrobial finish to prevent cracking and chipping.

FRAME CONSTRUCTION

Precision engineered mortise and tenon joints are glued with high solids water-based glue for tested durability.

BACK

The form-fitting, curved back is constructed with wood and features three cutouts for easy movement.

SEAT

The plush foam seat is 3 inches thick for extra comfort.

GLIDES

Options include nylon glides, small metal glides, standard metal glides, felt glides, or metal glides with a nylon cap.



DIMENSIONS

	SIDE CHAIR
OVERALL HEIGHT	30.25 in (76.8 cm)
OVERALL DEPTH	24 in (60.96 cm)
OVERALL WIDTH	19 in (48.26 cm)
SEAT WIDTH	18.25 in (46.355 cm)
SEAT HEIGHT	19 in (48.26 cm)
SEAT DEPTH	17.5 in (44.45 cm)
ARM HEIGHT	n/a
ARM OUTSIDE	n/a
WEIGHT	14 lbs. (6.35 kg)
STACK HEIGHT	n/a
CAPACITY	300 lbs.



WARRANTY

MITY warrants all MityLite & Holsag products. This chair comes with a 12-year structural frame warranty. Read the complete details about the warranty at mitylite.com/warranty.



MITYLITE

holsag

BERTOLINI