

MITYLITE[®]

FOUR  POINTS
BY SHERATON


APPROVED VENDOR

MEETING ROOM STACKING CHAIR

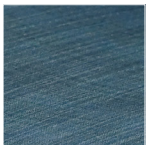


The **Four Points by Sheraton Meeting Room Stacking Chair** features a sturdy, powder coated steel frame and a comfortably contoured foam seat. The plush foam back offers ample back support and features four horizontal cushion panels. The backrest is built with a flex-back feature that allows guests to lean back for individualized comfort. Stackable and lightweight, it's an excellent chair for meeting rooms, banquet areas, and event spaces.

PRODUCT FEATURES

- 1** Comfortable padded back with four decorative panels
- 2** Flex-back reclines for individualized comfort
- 3** Tapered leg
- 4** Nickel-plated swivel glides protect floors and absorb shock
- 5** High strength 18-gauge steel frame
- 6** Small (0.7 inch) gap between back and seat for easy cleaning
- 7** Contoured 2.5-inch foam seat with waterfall edge
- 8** Durable, 100% polyester fabric withstands heavy use

FABRIC



Sapphire Blue

FRAME FINISH



Cocoa



OPTIONAL UPGRADES

Retractable Ganging (\$3.50)

Back Hand Hold (\$7.00)



BACK

Fully upholstered, the chair back features four horizontal cushions for comfort.

FRAME

Constructed from 18-gauge tubular steel, the frame is strong enough to support 1,000 pounds.

FRAME FINISH

Smooth and glossy, the frame is finished with a Cocoa brown powder coating to resist scratches and stains.

SEAT

Covered with durable fabric and 2.5 inch foam, the seat base is made of injection molded polypropylene.

GLIDES

Nickel-plated swivel glides protect floors.



STACKING

The optimal chair stack height is 10 chairs per stack.



FLEX-BACK

For individualized seating comfort, the flex back allows guests to lean back for additional comfort.



GANGING

Retractable ganging (optional upgrade).



HANDHOLD

Back handhold upgrade available for refined style and ease of handling.

SPECIFICATIONS

SEAT HEIGHT	SEAT WIDTH	SEAT DEPTH	OVERALL HEIGHT	OVERALL WIDTH	OVERALL DEPTH	WEIGHT
19.4 in (49.3 cm)	16.1 in (40.8 cm)	20.2 in (51.3 cm)	34.2 in (86.8 cm)	18.7 in (47.5 cm)	23.8 in (60.4 cm)	23 lbs. (10.4 kg)

WARRANTY

MITY warrants all MityLite products. This chair comes with a 12-year structural frame warranty. Read the complete details about the warranty at mitylite.com/warranty.



MITYLITE

holsag
by MityLite

BERTOLINI