



## SUPPLY LIST

Before beginning cart assembly, ensure that all the following components and fasteners are included in the package.

### PARTS

- 1 Base (112667)
- 2 Handle (112668)
- 3 Rear Support (112669)
- 4 Front Support (112675)
- 5 Rung (112676)
- 6 Hardware Kit (CRTXPKD14HDW)
- 7 (2) 8" Fixed Casters (112307)
- 8 (2) 8" Swivel Casters with Brake (112296)

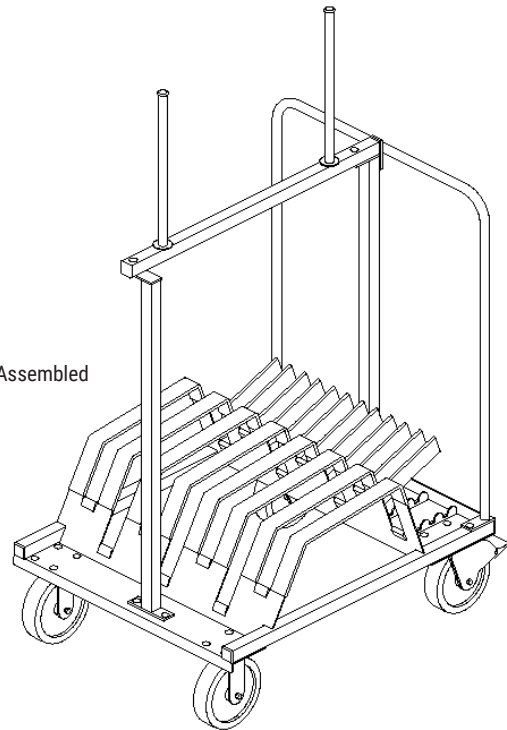
### TOOLS REQUIRED

- 1 9/16" Wrench/Ratchet and Socket (not included)

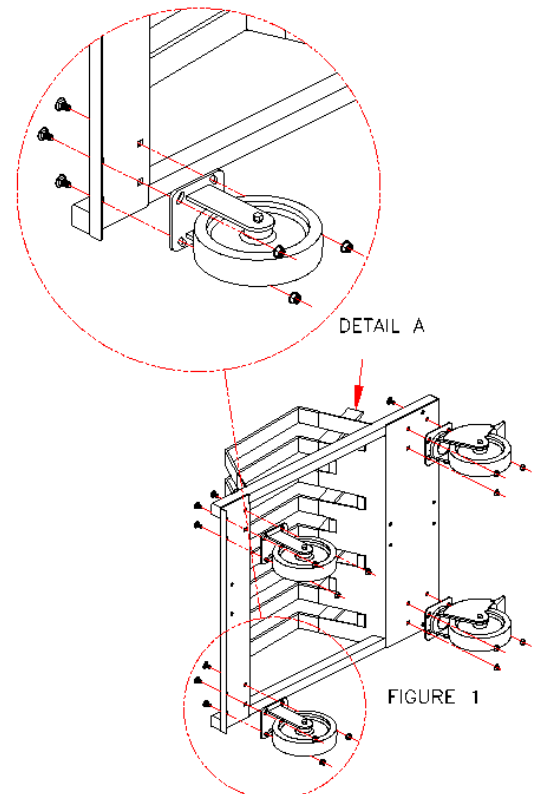
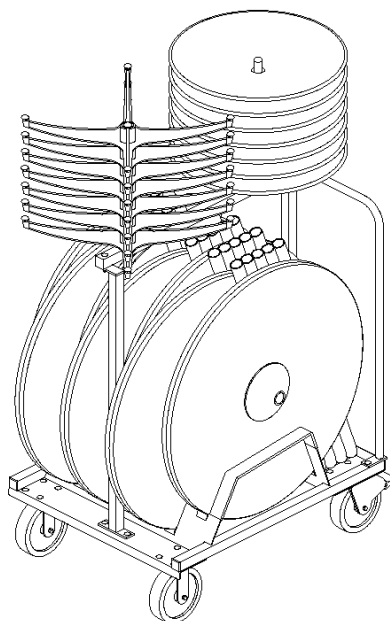
### NOTES

- 1 We recommend at least two people assemble this cart.
- 2 DO NOT tighten bolts until the cart is completely assembled (this allows for adjustment, if necessary).
- 3 ALWAYS load the bottom of the cart first (alternating each side to evenly distribute weight).
- 4 Bases MUST be loaded top-down (see Cart Loaded image).

Cart Fully Assembled



Cart Loaded



See the other side for more assembly information.



### ASSEMBLY INSTRUCTIONS

#### STEP

- 1** Lay the Base on its side. Attach the Swivel Casters on the side of the Cart with Pole Supports (see arrow in Figure 1). Attach the Fixed Casters to the other side (see Figure 1, Detail A) using 3/4" long, 3/8" carriage bolts, and nuts. Tighten.
- 2** Orient the Handle so that the tabs face towards the center of the Cart. Attach the Handle to the Base (see Figure 2, Detail B) using 2-1/2" long, 3/8" carriage bolts, and nuts. Tighten by hand.
- 3** Orient the Front Support so the upper tab faces left (see Figure 2). Attach the Front Support to the Base (see Figure 2, Detail C) using 3/4" long, 3/8" carriage bolts, and nuts. Tighten by hand.
- 4** Orient the Rear Support so that the top tab faces toward the center of the cart (see Figure 3). Attach the Rear Support to the Base (see Figure 3, Detail D) using 3/4" long, 3/8" carriage bolts, and nuts. Tighten by hand.
- 5** Orient the Rung so that the hole closest to the end is facing the Front Support (see Figure 4). Attach the Rung to the Front Support (see Figure 4, Detail F) using 2-1/2" long, 3/8" carriage bolt, and nut. Tighten by hand.
- 6** Attach the Rung to the Rear Support (see Figure 4, Detail E) using 2-1/2" long, 3/8" carriage bolt, and nut. Tighten by hand.
- 7** Slide the neoprene washers over the Vertical Rungs (see Figure 4).
- 8** Connect the Rear Support to the Handle using a 2-1/2" long, 3/8" carriage bolt and nut (see Figure 5, Detail G). Tighten by hand.
- 9** Tighten all bolts. Add the bolt cap to the exposed threads (see Figure 4, Detail F).

